



Comune di
Milano

AGENZIA
MOBILITÀ
AMBIENTE
TERRITORIO


Piazze Aperte

Public Space and Active Mobility
for Milan's neighbourhoods

*Demetrio Scopelliti,
Director for Urban Planning and Public Space at AMAT, City of Milan*

An aerial photograph of the Milan metropolitan area. A white, irregular line is drawn over the image, representing the projected urban boundary for the year 2030. The line encompasses the dense urban core and extends into the surrounding agricultural and forested areas. The text 'Milano 2030' is centered over the urban core.

Milano 2030



Public space as a common good

Planning Masterplan - PGT

Sustainable Urban Mobility Plan - SUMP

Climate Plan - PAC

Neighbourhood Plan

Towards Milan 2030



Covid-19

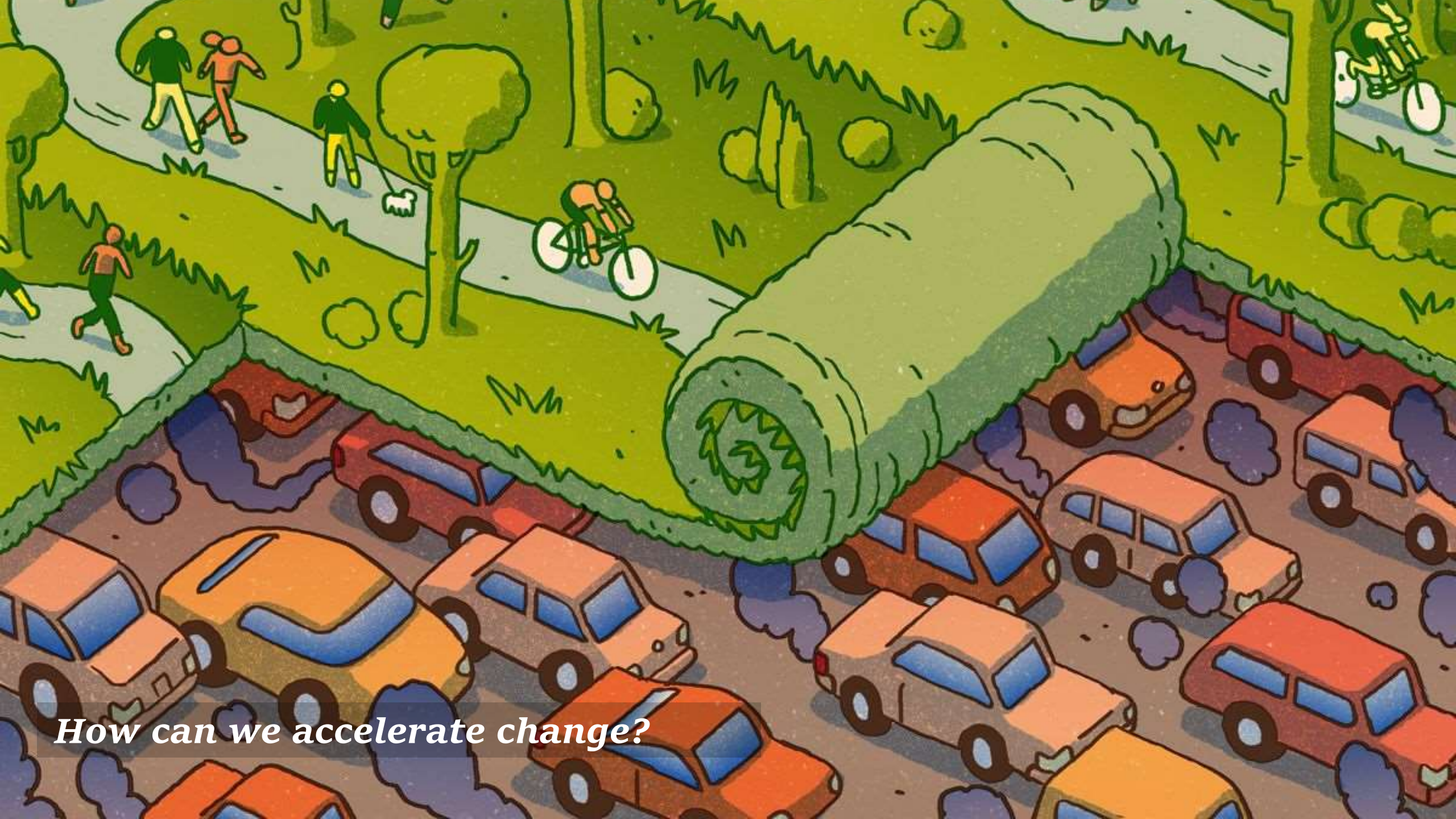




Normality?

An aerial photograph of the Milan metropolitan area, showing a dense network of roads and green spaces. A semi-transparent map overlay is centered on the city, with the text 'Milano 2030-2020' superimposed on it. The text is in a bold, sans-serif font, with 'Milano' in white, '2030-' in white, and '2020' in yellow. The map overlay shows a complex network of roads and green spaces, with the city center and surrounding areas clearly visible.

Milano 2030-2020



How can we accelerate change?



Business as usual

Millions

Years

Unreversible

Piazzale Archinto





Tactical Urbanism

Thousands
Months
Reversible

Spoleto Venini





Before



Interim



After



Tools

Kit

Collaboration Pact

Volunteering

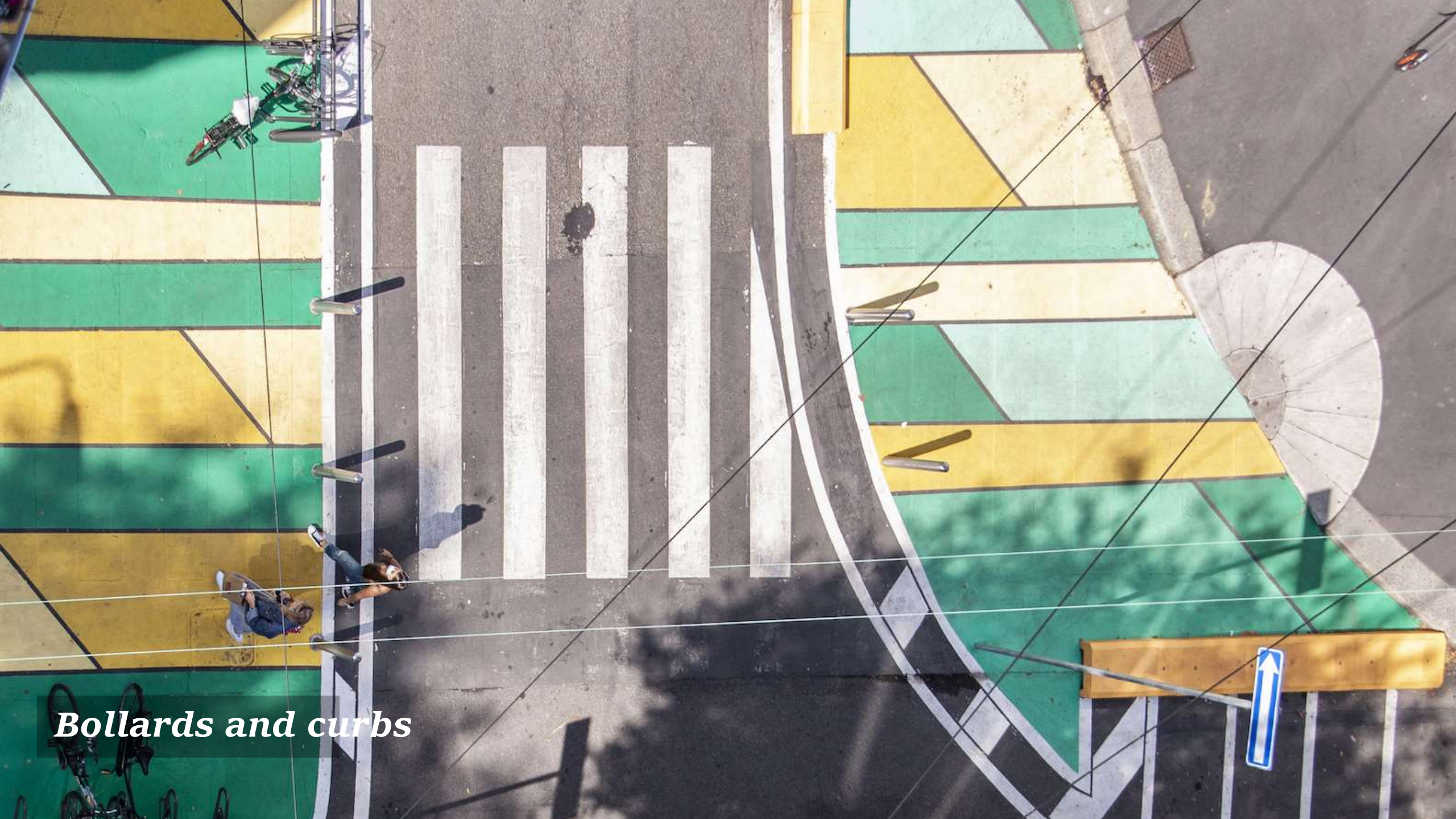
Porta Genova



Paint



Asphalt art



Bollards and curbs



Street furniture





Seasonal Activators



Volunteering



Community events



Collaboration

An aerial photograph of a public plaza in an urban setting. The plaza's ground is decorated with a large-scale geometric pattern of yellow and white triangles. Two green ping pong tables are positioned on the yellow sections. Numerous people are seen walking, sitting, and playing on the plaza. The plaza is bordered by a multi-story building with a light-colored facade and red accents on the left, and a street with parked cars and a bus on the right. A large tree with dense green foliage is on the far left. The text "Open Plazas" is overlaid in a large, white, serif font, and "Piazze Aperte" is overlaid in a smaller, white, sans-serif font below it.

Open Plazas

Piazze Aperte

Triennale Milano

25 gennaio 2020, ore 14



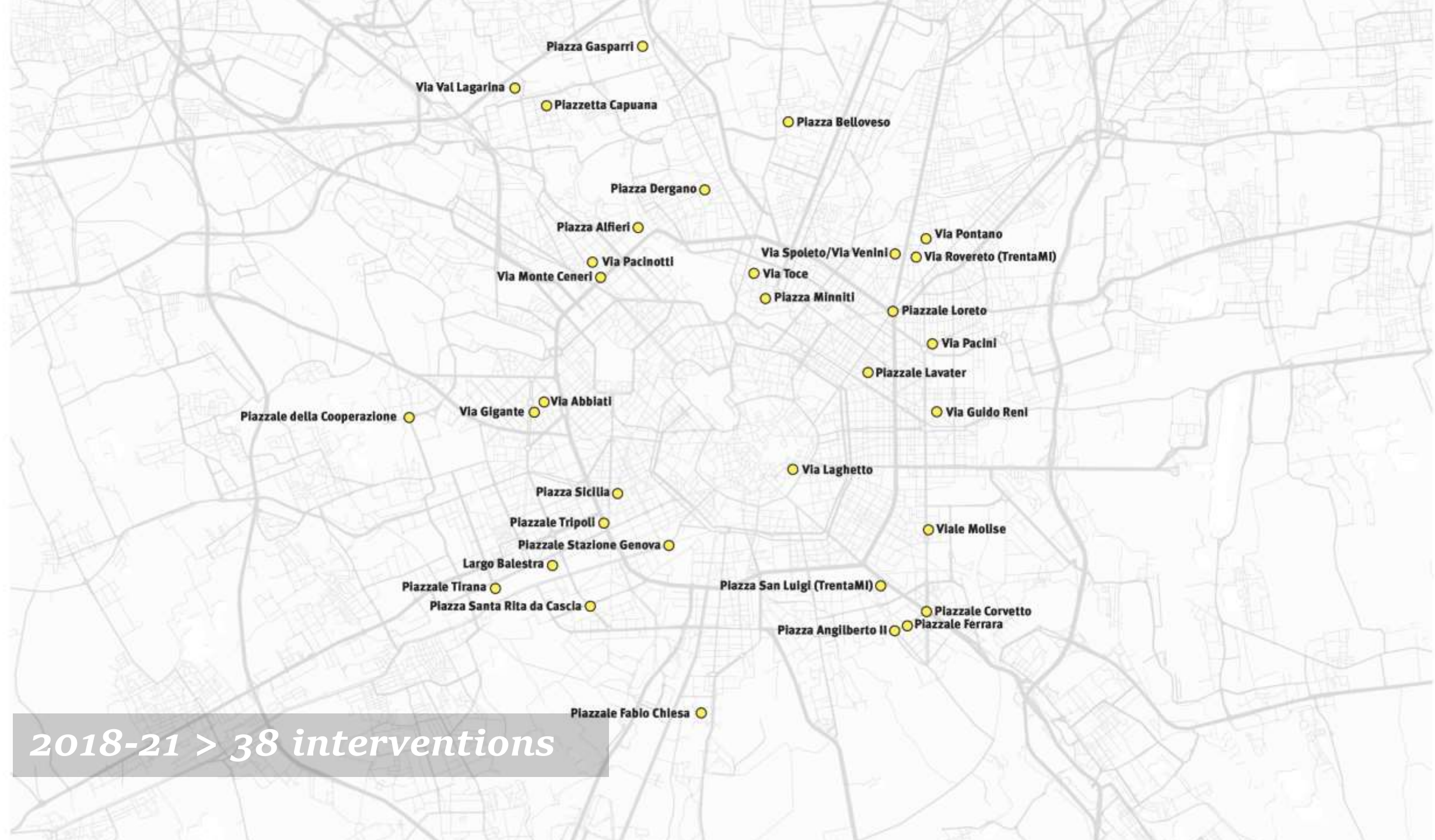
Comune di
Milano

Piano
Quartieri

Piazze Aperte in ogni quartiere

2020 > 65 proposals





2018-21 > 38 interventions

Before

Dergano



After

Dergano





Dergano

Before



Vie Spoleto Venini

After



Piazza ArcoBalena



Piazza ArcoBalena



Piazza ArcoBalena



Piazza ArcoBalena

Before



Piazza Sicilia

After

Piazza Sicilia





Piazza Sicilia



Piazza Sicilia

Before



Piazzale Bacone

After



Piazzale Bacone



Piazzale Bacone



Montevelino

A person in a black long-sleeved shirt and black pants is performing a handstand on a colorful, geometric-patterned mat. The mat features large sections of orange, yellow, and green, separated by blue lines. The person is barefoot and has their arms extended upwards, holding a yellow ribbon. In the background, there is a grey stone building with arched windows, a metal railing, and several people walking. A woman in a grey coat is standing near a bicycle. A police officer in a blue uniform is also visible. The scene is set in an urban environment with trees and buildings in the distance.

Montevelino



Montevelino



Val Lagarina



Val Lagarina



Piazza Minniti



Piazza Minniti



Open Streets

Strade Aperte



67 km of new lanes



Streateries

Tavolini







>500 *streateries*



15 km/h speed 'shared' zones



Dining streets





New paradigms

Sustainable mobility

Ecology

Urban Quality

Social Inclusion

Piazza Angilberto



Demetrio.Scopelliti@amat-mi.it